

rev. 10 - June / 2023

AIR CONDITIONER FOR CONTROL BOARDS

models **PSC 6210 – 6215 – 6220 – 6223**



Condizionatori d'aria per quadri comando modello **PSC 6210 – 6215 – 6220– 6223**

TECHNICAL DATA H31 : power supply 230 V 1~ 50-60Hz

ARTICLE CODE	PSC	6210 H31	6215 H31	6220 H31
REFRIGERATING POWER				
L35 - L35 (50/60) L35 - L50 (50/60)	W W	1080 / 1150 830 / 880	1500/1650 1150/1260	2000/2220 1560/1750
OPERATING FIELD				
AMBIENT TEMPERATURE PANEL TEMPERATURE	°C °C	0 – 55 20 – 50		
VOLTAGE				
RATED VOLTAGE		230V~ 50- 60 Hz 1~		
INTENSITY				
RATED CURRENT (FLA 50/60) STARTING CURRENT (LRA 50/60)	A A	3,1 / 3,5 10 / 10	4,2/4,8 19,7/20	4,9/5,5 21,8/23
ABSORBED POWER				
RATED L35 - L35 (50/60) MAXIMUM L35 - L50 (50/60)	W W	520 / 600 590 / 670	740/800 870/1040	1090/1200 1250/1500
REFRIGERANT				
TYPE CAPACITY MAX PRESSURE	R g. kPa	134a 2250	134a 485 2250	134a 2250
PROTECTION RATING - EN 60529				
INTERIOR CIRCUIT EXTERIOR CIRCUIT	IP IP	54 34		
SPOUT FEED AIR FLOW RATE				
INTERIOR CIRCUIT EXTERIOR CIRCUIT	mc/h mc/h	570 860	860 1050	
SOUND PRESSURE				
MAX	dB (A)	62		60
NET WEIGHT				
	Kg	39	40	52
COLOUR				
STANDARD	RAL	7035 (other colours on request)		
DIMENSIONS				
BASE DEPTH HEIGHT	mm. mm. mm.	400 250 940		
INTERMITTENCE				
		100 %		
SETTING				
Digital electronic thermostat		Factory settings: set =35 °C – Δt =5k		

TECHNICAL DATA: versions N31 : power supply 400/460 V 1~ 50-60Hz

Condizionatori d'aria per quadri comando modello **PSC 6210 – 6215 – 6220– 6223**

ARTICLE CODE	PSC	6210 N31	6215 N31	6220N31
REFRIGERATING POWER				
L35 - L35 (50/60)	W	1030/1090	1500/1650	2000
L35 - L50 (50/60)	W	820/860	1150/1260	1560
OPERATING FIELD				
AMBIENT TEMPERATURE	°C	0 – 50		
PANEL TEMPERATURE	°C	20 – 50		
VOLTAGE				
RATED VOLTAGE	V / Hz	400/460V 1~ 50- 60 Hz		
INTENSITY				
RATED CURRENT (FLA 50/60)	A	1,8/2	2,6/2,8	2,9
STARTING CURRENT (LRA 50/60)	A	6/6	12/13	12,5
ABSORBED POWER				
RATED L35 - L35 (50/60)	W	520/600	740/800	1090
MAXIMUM L35 - L50 (50/60)	W	590/670	870/1040	1340
REFRIGERANT				
TYPE	R	134a	134a	134a
CAPACITY	g.		485	
MAX PRESSURE	kPa	2250	2250	2250
PROTECTION RATING - EN 60529				
INTERIOR CIRCUIT	IP	54		
EXTERIOR CIRCUIT	IP	34		
SPOUT FEED AIR FLOW RATE				
INTERIOR CIRCUIT	mc/h	570		860
EXTERIOR CIRCUIT	mc/h	860		1050
SOUND PRESSURE				
MAX	dB (A)	62		60
NET WEIGHT				
	Kg	42	45	57
COLOUR				
STANDARD	RAL	7035 (other colours on request)		
DIMENSIONS				
BASE	mm.	400		
DEPTH	mm.	250		
HEIGHT	mm.	940		
INTERMITTENCE				
		100 %		
SETTING				
Digital electronic thermostat		Factory settings: set =35 °C – Δt =5k		

Condizionatori d'aria per quadri comando modello **PSC 6210 – 6215 – 6220– 6223**

TECHNICAL DATA: versions N33 : power supply 400/440 3~ 50-60Hz

ARTICLE CODE	PSC	6215 N33	6223 N33
REFRIGERATING POWER			
L35 - L35 (50/60)	W	1400/1500	2300/2500
L35 - L50 (50/60)	W	1050/1160	1940/2190
OPERATING FIELD			
AMBIENT TEMPERATURE	°C	20 – 55	
PANEL TEMPERATURE	°C	20 – 50	
VOLTAGE			
RATED VOLTAGE	V / Hz	400V-50 460V-60 Hz 3~	
INTENSITY			
RATED CURRENT (FLA 50/60)	A	2,1 / 1,9	2,4 / 2,2
STARTING CURRENT (LRA 50/60)	A	12 / 12	12 / 12
ABSORBED POWER			
RATED L35 - L35 (50/60)	W	650/700	1300/1600
MAXIMUM L35 - L50 (50/60)	W	800/850	1520/1840
REFRIGERANT			
TYPE	R	134a	134a
CAPACITY	g.	485	600
MAX PRESSURE	kPa	2250	2250
PROTECTION RATING - EN 60529			
INTERIOR CIRCUIT	IP	54	
EXTERIOR CIRCUIT	IP	34	
SPOUT FEED AIR FLOW RATE			
INTERIOR CIRCUIT	mc/h	570	860
EXTERIOR CIRCUIT	mc/h	860	1050
SOUND PRESSURE			
MAX	dB (A)	60	68
NET WEIGHT			
	Kg	55	59
COLOUR			
STANDARD	RAL	7035 (other colours on request)	
DIMENSIONS			
BASE	mm.	400	
DEPTH (EXCLUDING GRID)	mm.	250	
HEIGHT	mm.	940	
INTERMITTENCE			
		100 %	
SETTING			
Digital electronic thermostat		Factory settings: set =35 °C – Δt =5k	

Condizionatori d'aria per quadri comando modello **PSC 6210 – 6215 – 6220– 6223**

Technical Description series PMP: **MODELS: PSC 6210_6215_6220_6223**

- Power Supply **H31** = 230V 1~ 50-60Hz, **N31** = 400/460V 1~ 50/60Hz, **N33** = 400/460V 3~ 50/60Hz
- Refrigerant type R134a without CFC
- The evaporator, a diamond shape, ensures the self-draining of condensate,
Electronic and digital thermostat with microprocessor endowed for the exit of relay (it prevents the brief intermittent cycles) and with functions of alarm integrated: over range, spoiled probe, interrupted probe, wrong connection probe
- Control pressure switch with automatic regulation two-speed of condenser fan: anti-dusting, anti-fog, anti-freeze, anti-noise
- Control pressure switch with signal of alarm for high pressure or filter dirty (standard supply)
- Filter in stocking of washable polyurithane. In order to change the filter don't need utensils (OPTIONAL)
- Compressor and fans with thermo-protector
- Digital input for the control of micro location door.
- Connector WAGO for easy connection to the power supply

STANDARD ACCESSORIES

• Kit installation:	• connector Wago X-com 500V 32A for easy connection to the power supply
• 3 m. of adhesive gasket	• Instruction, use and maintenance manual
• Stud bolts, flanged nuts, washers	• Trial sheet
• lifting eyebolt	• Guarantee certificate

ACCESSORIES SUPPLIED ON REQUEST	Codice articolo
Frame for semi-inset installation 100 mm	PAI 1038100 XX
Frame for semi-inset installation 225 mm	PAI 1038225 XX
holder complete with dust filter in polyurethane	P10389 XX
Filter baffle protect from dust for grid ventilation ambient (in polyurethane) pack. 5 pz	050321
Filter baffle protect from oil for grid ventilation ambient pack. 5 pz	050111
Condenser fan speed regulator pressure alarm: 1 NC voltage free contact. Blocks the appliance when the pressure in the condensation circuit exceeds the permissible value.	PAF 208006
Bottle water condensation hospitalization, 1 liter, with bracket and fixing screws	P0000201

DESCRIPTION CODE

Serie	Modello	Tensione V	Frequenza Hz	Fasi ~	Verniciatura	Tipo di esecuzione
Psc	6215	230 – H 400 – N	50-60 -- 3	Monofase -- 1 Trifase -- 3	Ral 7032 – 01 Ral 7035 – 07	Standard -- A

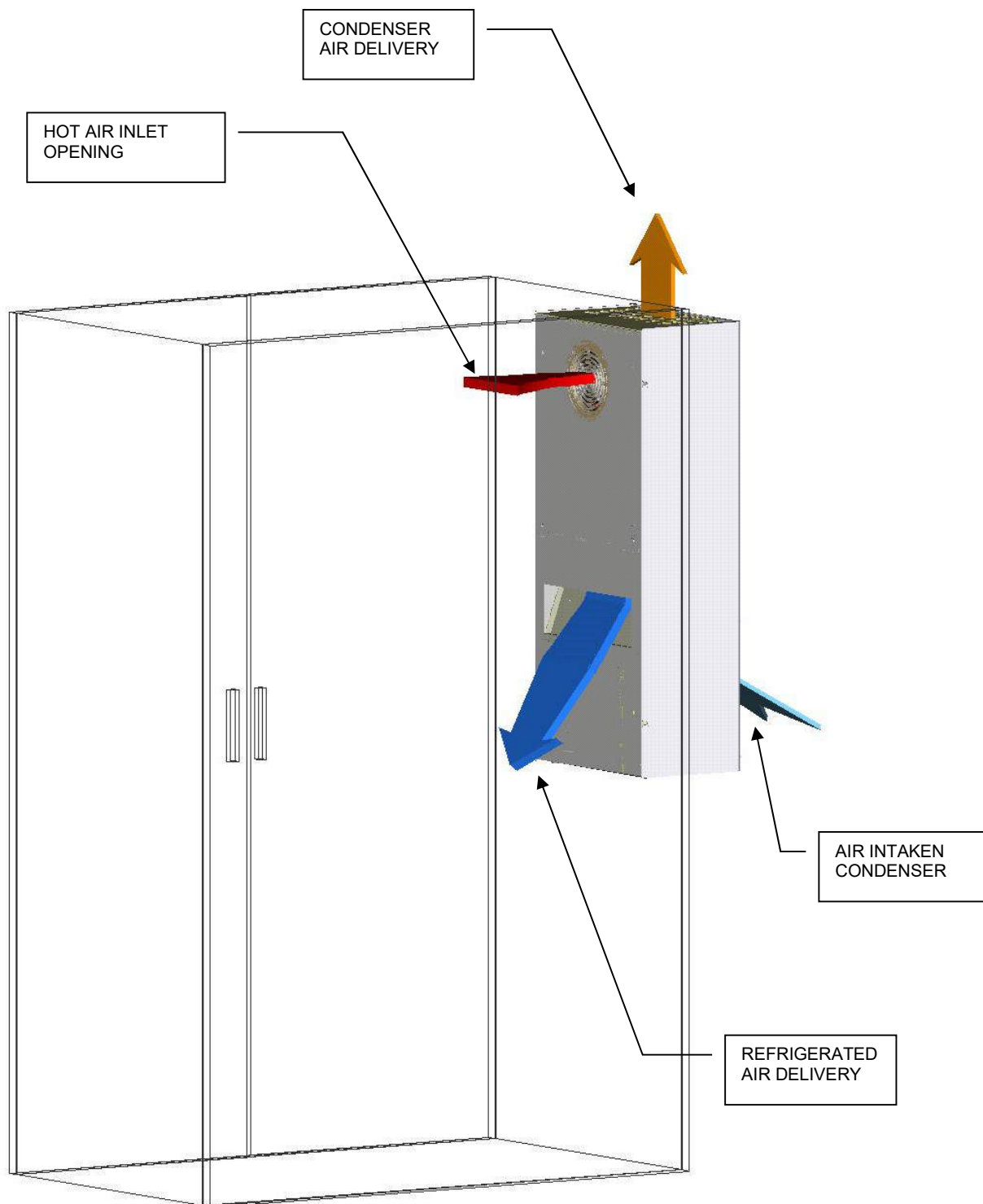
COMPLETE CODE OF ORDER (es. PSC 6215- H3107_A)

PSC	6215	H	3	1	07	A
-----	------	---	---	---	----	---

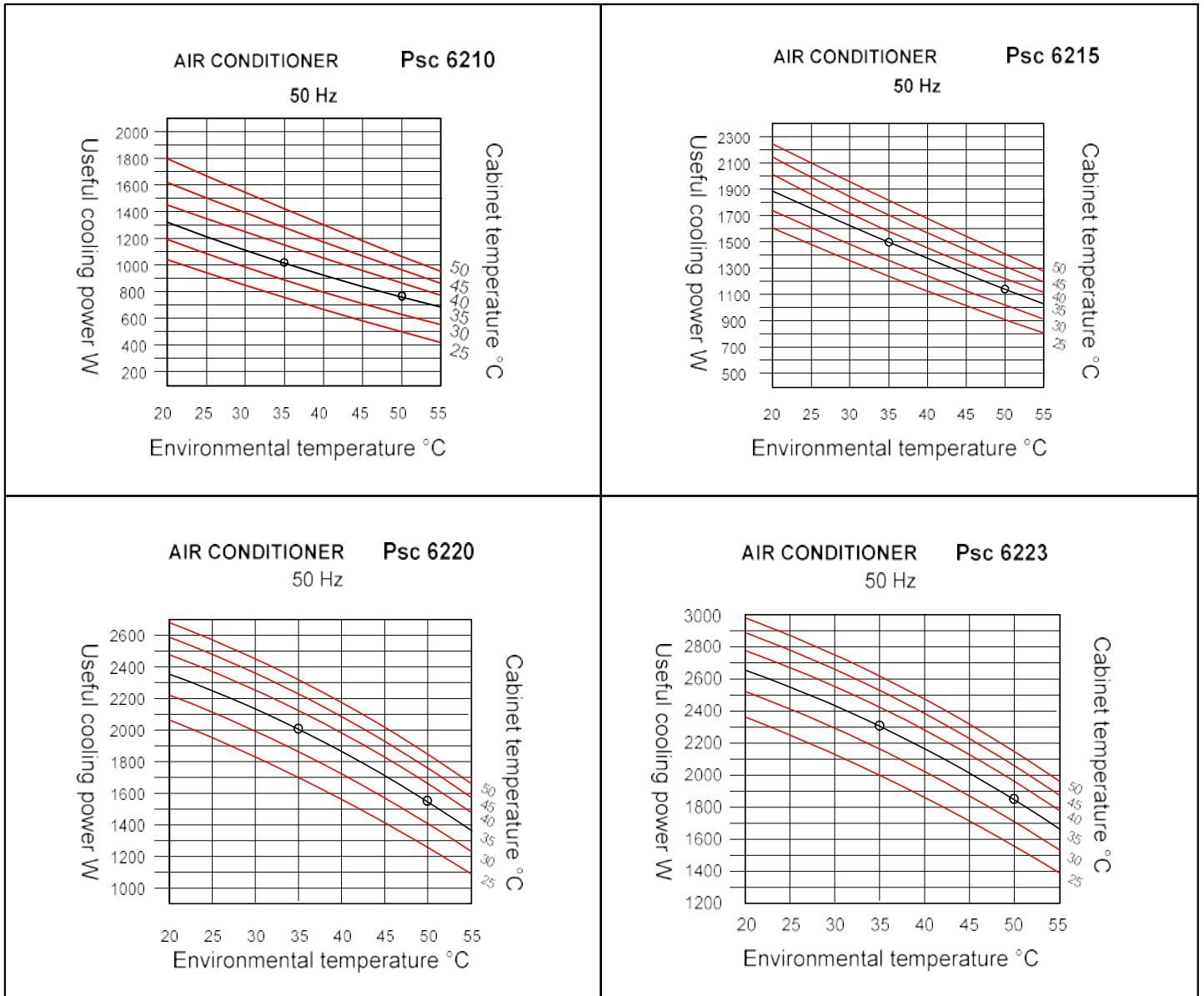
VENTILATION FLOWS:

The copious ventilation and rational distribution of the air prevent the formation of pockets of heat inside the cabinet.

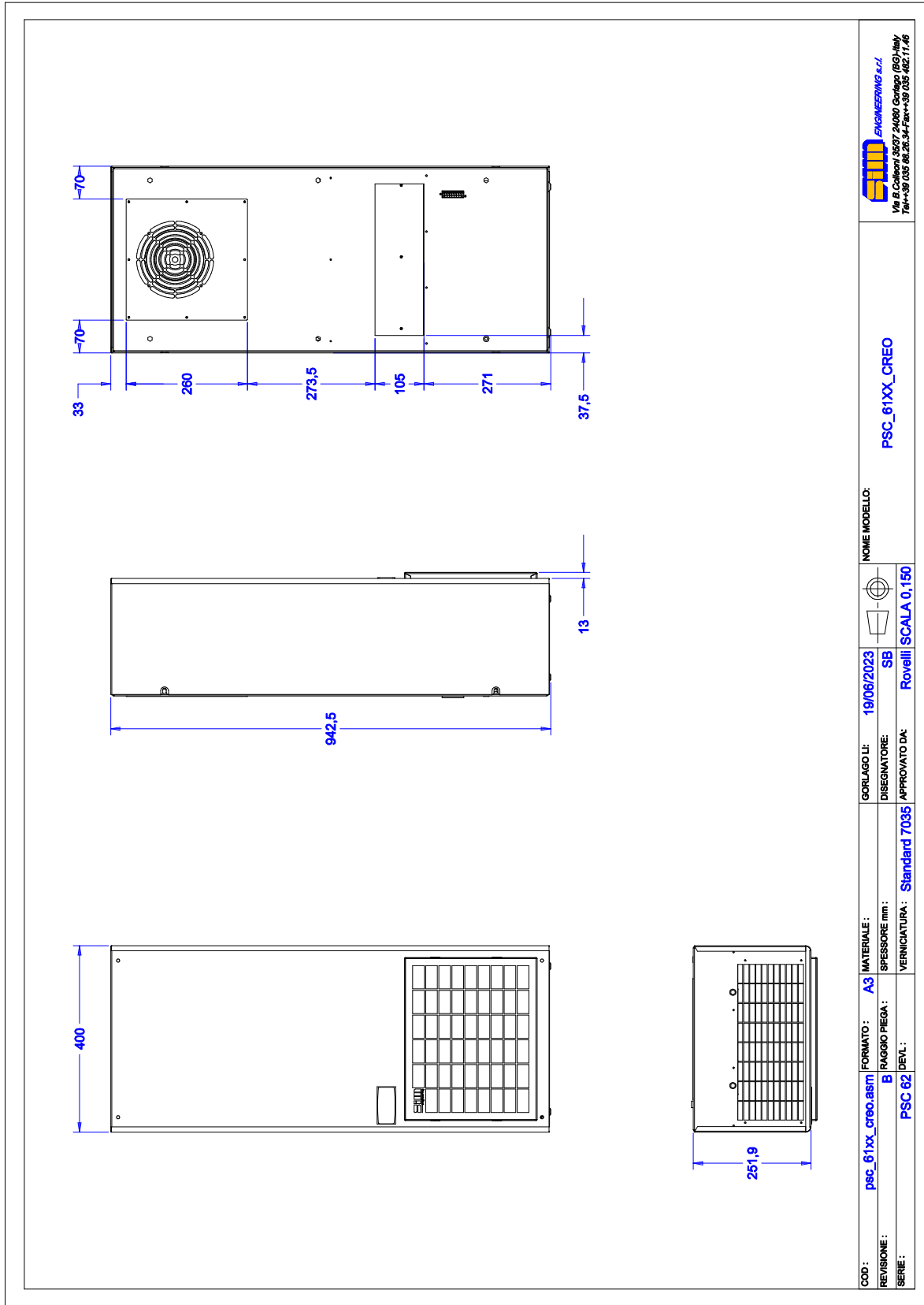
The different speeds for the condenser fan to ensure correct operation of the unit in various climates and to limit the build-up of dust in the filters and heat exchange banks.



USEFUL COOLING POWER DIAGRAMS:

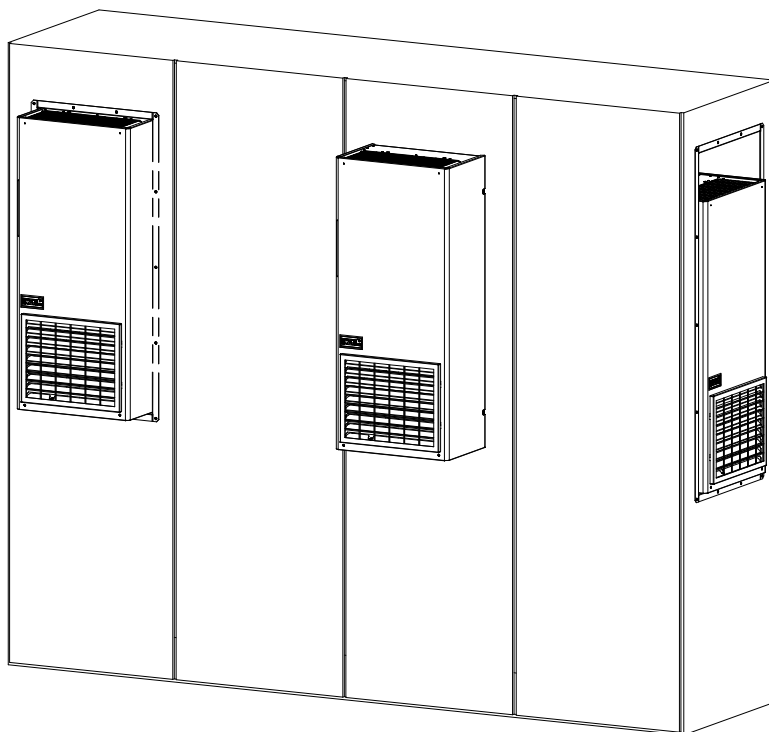


OVERALL SIZES models PSC 6210 - 6215 - 6220 - 6223

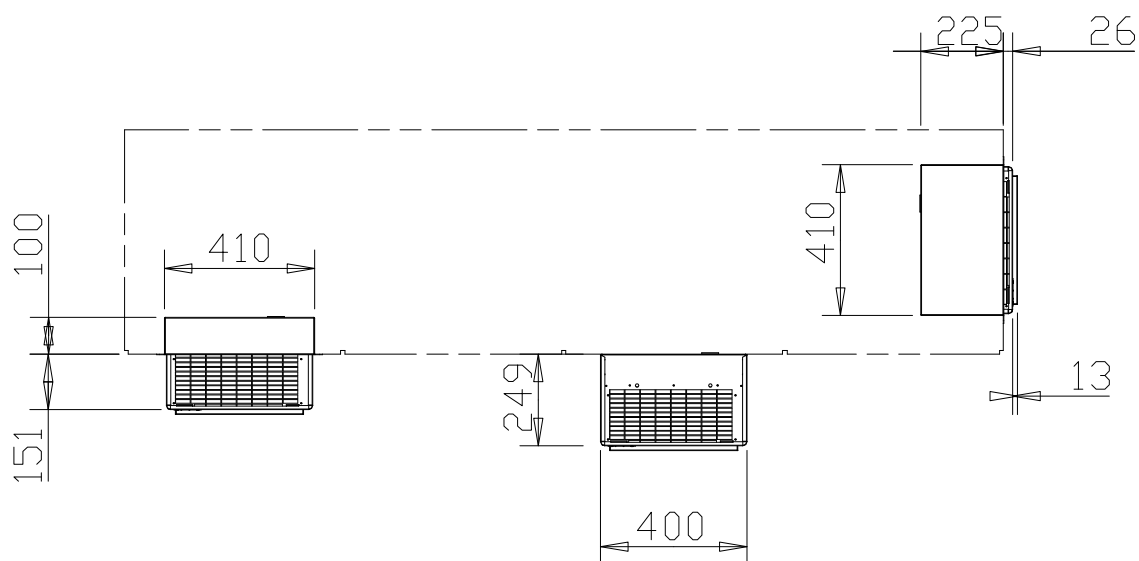


SIM ENGINEERING S.r.l.
 Via B. Colleoni 33/35-24060 GORLAGO (BG) Italy
 Tel: +39 035 882634 - Fax: +39 035 4821146

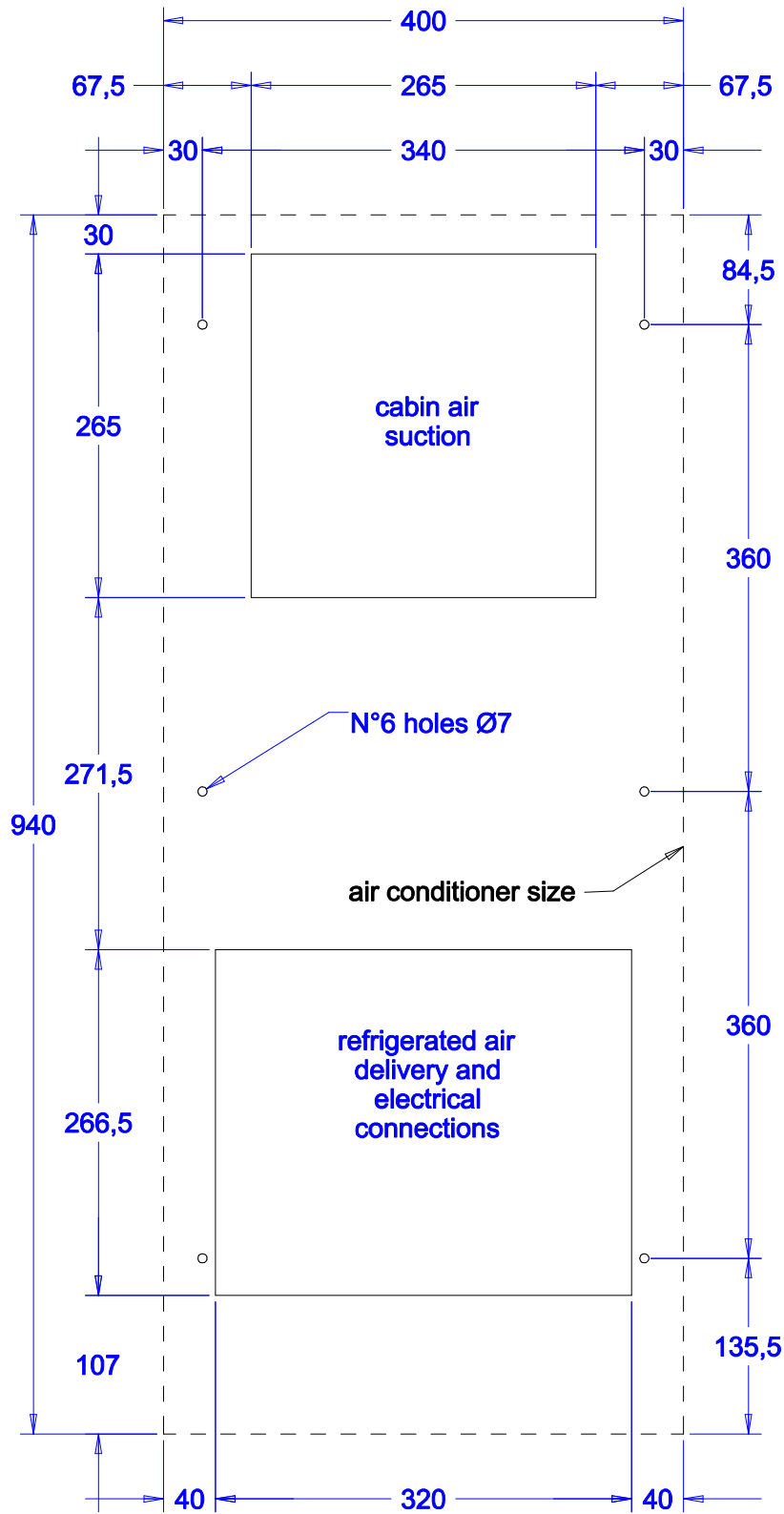
OVERALL SYZE INSTALLATION:



OVERALL SIZE INSTALLATION TYPE:

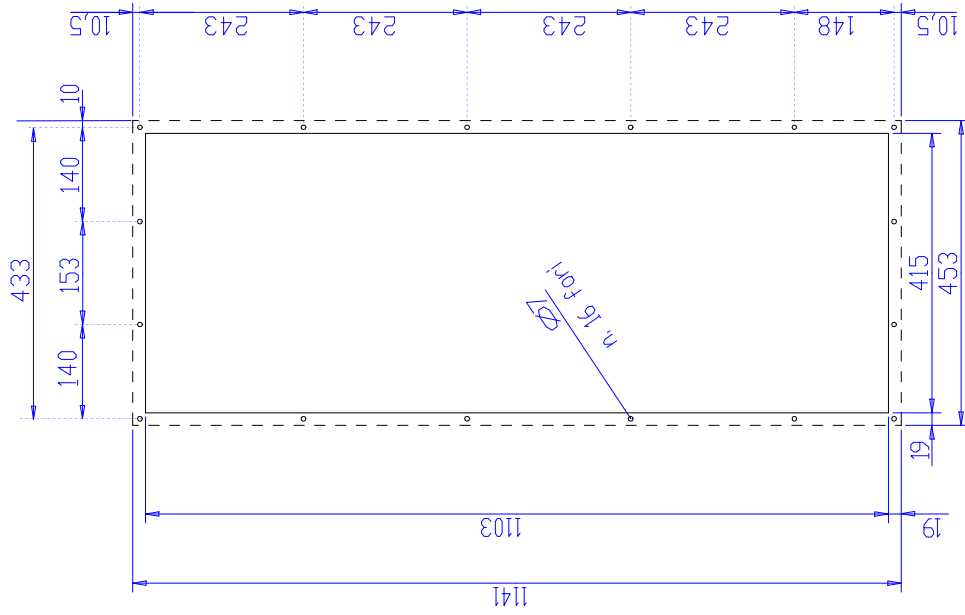


Drilling template for standard installation:



Drilling template for completely recessed installation:

Slots and holes for installation of the casing PAI1038225xx



Carter PAI1038225xx - for semi-recessed install
recess depth 225 mm

