

January / 2020

AIR CONDITIONER FOR CABINET AND CONTROL PANELS

type **Pxs 5401 - Pxs 5315**



Technical description

- Mounting on the side of cabinets with a depth of 800 mm. and height:
1800 mm (with base H200), refrigerated air delivery through the base
2000 mm without base, refrigerated air delivery through the side of the cabinet
2000 mm with base H200, refrigerated air delivery through the base
- Power line 400V 50Hz / 460V 60Hz AC trifase.
- Electrical connections using pre-wired cables
- A phase sequence control relay does not allow commissioning in the event of incorrect connection.
- Removable thermostat probe (3 m max) for better control of multiple elements more sensitive to thermal excursions
- Electronic Thermostat with Set and Dt adjustable from +25 to +45°C and from 1 to 10 K respectively, set in the factory with Set at +35°C and Dt at 5K; a LED, on the front of the instrument shows the status of the output relay
- Safety alarm for high pressure (filter and / or dirty condenser, condenser fan faulty)
- Safety alarm for low pressure (lack of refrigerant fluid, evaporator fan faulty)
- Blocking relay for alarms signaling:
relay always energized during normal operation, de-energized in case of fault or power lack or relay failure, alarm signal by voltage-free contact.
- A specific thermostat relay controls the eventual anti-condensation resistances (230V 2A max)
- Motorcompressor and electric fans equipped with built-in thermo-ammeter protection
- Electronically controlled condenser fan to adjust the air consumption to the actual system requirement: summer / winter night / day function.
- refrigerant fluid without CFC: R134A (5401) or R407C (5315)
- Filter in aluminum mesh, regenerable, on ambient air intake
- Condensate accumulation tank with high head exhaust pump
- Digital input to cooling stop when the doors are opened: both the fans and the compressor are stopped. On closing, the internal fan starts immediately, a delay on starting of the compressor is provided to prevent short intermittent cycles.
- Installation kit provided incomplete with studs, washers, nuts, gasket and lifting eyebolts

Air conditioner for cabinet and control panels **Pxs 5401 – Pxs 5315**

TECHNICAL DATA 400/440 V 3 ~ 50/60 Hz

<i>ARTICLE CODE</i>	Pxs	5401N33	5315N33
REFRIGERATING POWER			
L35 - L35 (50/60Hz)	W	10.100 / 11.580	15.000 / 16.800
L35 - L50 (50/50Hz)	W	8.200 / 8.800	11.000 / 11.800
OPERATING FIELD			
AMBIENT TEMPERATURE	°C	+10~+60	+10 ~ +50
PANEL TEMPERATURE		+20~+45	+20 ~ +45
VOLTAGE			
RATED VOLTAGE	V / Hz	400/460V 50/60Hz 3~	
CURRENT			
RATED CURRENT (FLA 50 / 60 Hz)	A	max 8,5 / 9,5	max 14,1
STARTING CURRENT (LRA50 / 60 Hz)		47 / 57	52
ABSORBED POWER			
RATED L35 - L35 (50 Hz / 60 Hz)	W	4.820 / 5.860	5.250 / 6.450
MAXIMUM L35 - L50 (50 Hz / 60 Hz)	W	5.300 / 6.400	6.300 / 7.400
REFRIGERANT			
TYPE	R	134a	407C
CAPACITY	g.	2.600	2.600
MAX. PRESSURE.	kPa	2.400	2.900
PROTECTION RATING - EN 60529			
INTERIOR CIRCUIT	IP	54	
EXTERIOR CIRCUIT		34	
SPOUT FEED AIR FLOW RATE			
INTERIOR CIRCUIT	mc/h	2.400	
EXTERIOR CIRCUIT		4.600	
SOUND PRESSURE			
MAXIMUM	dB (A)	68	
NET WEIGHT			
ACCESSORI ESCLUSI	Kg	190	205
COLOUR			
STANDARD	RAL	7035 (other colors available upon request)	
DIMENSIONS			
BASE		800	
DEPTH	mm.	400	
HEIGHT		2000	
INTERMITTENCE			
		100 %	
SETTING			
Electronic thermo controller		factory setting: set =35 °C	

Air conditioner for cabinet and control panels **Pxs 5401 – Pxs 5315**

STANDARD EQUIPMENT - OPTIONS - ACCESSORIES

type **Pxs_5401**

DESCRIPTION OF THE CODE AND VARIANTS

Series	type	Voltage V	Frequence Hz	Phases ~	Paint	kind of execution
Pxs	5401	400/440 -- N	50/60 -- 3	trifase - 3	Ral 7032 -- 01 Ral 9010 -- 03 Ral 1014 -- 06	standard --- A

EXAMPLE OF COMPLETE ORDERING CODE

Pxs	5401	N	3	3	01	A
-----	------	---	---	---	----	---

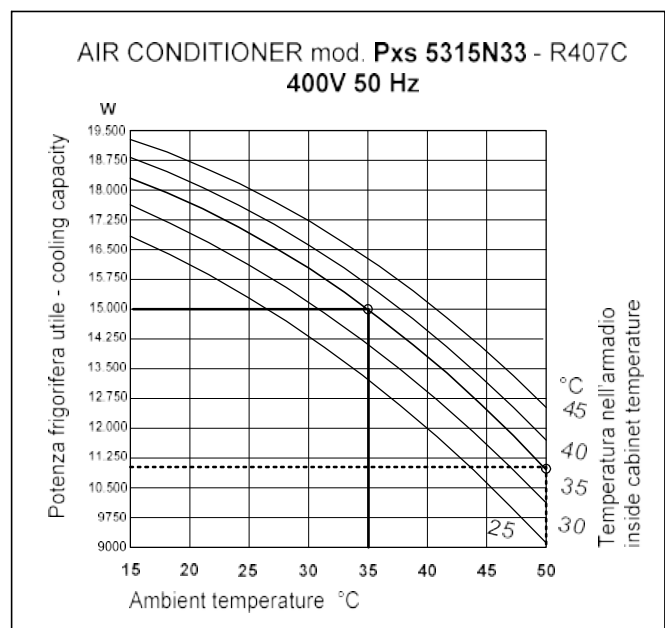
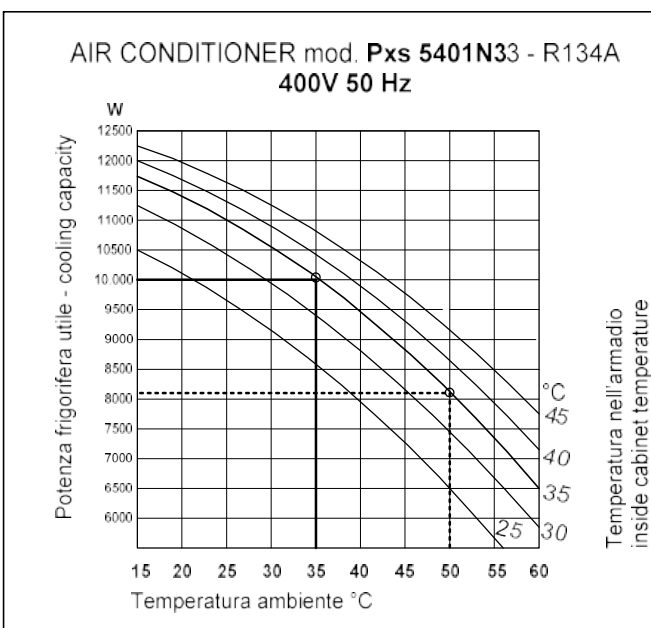
STANDARD EQUIPMENT

1. Installation, use and maintenance manual	3. Test certificate
2. Installation kit, consisting of:	4. Warranty certificate
• nuts washers studs,	
• lifting eyebolts	
• adhesive seal	

OPTIONALS

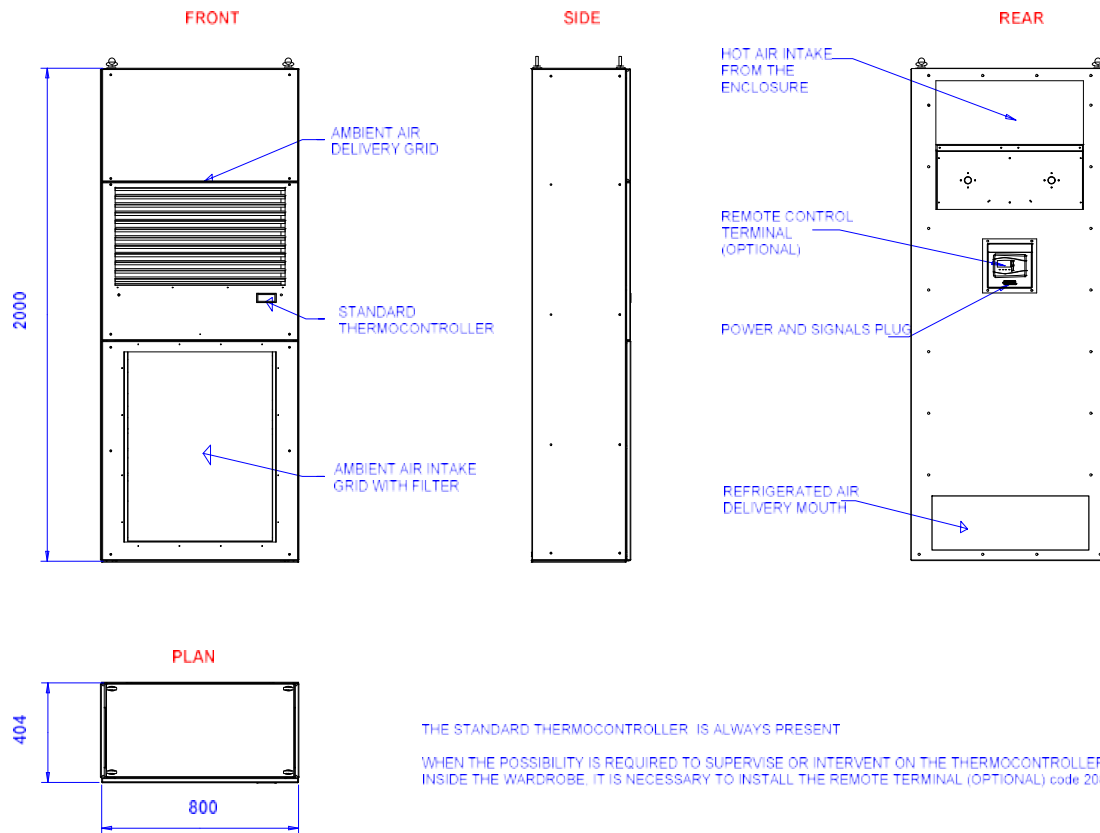
	Codice articolo
Base (200 mm heigth) for air delivery in the subfloor of the cabinet	103227__

Cooling capacity diagram:

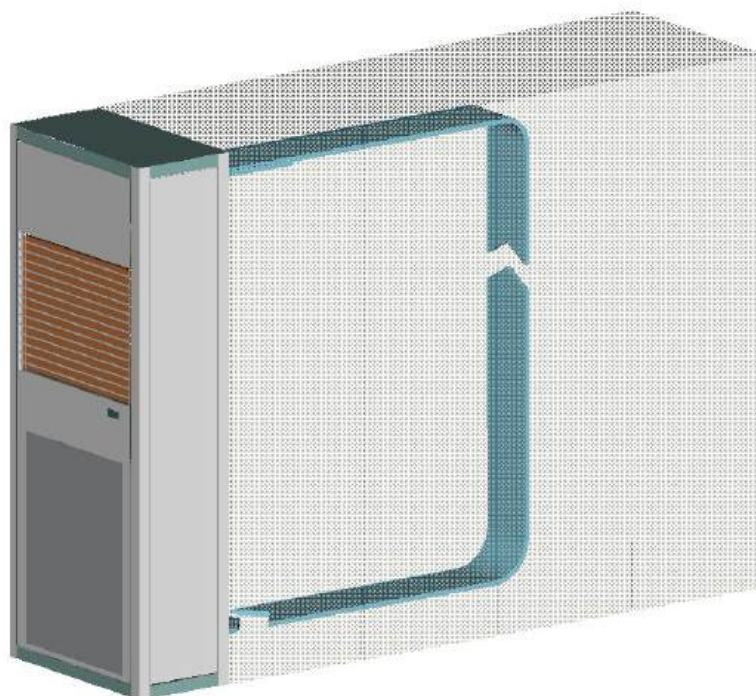


Air conditioner for cabinet and control panels Pxs 5401 – Pxs 5315

Standard mounting overall size

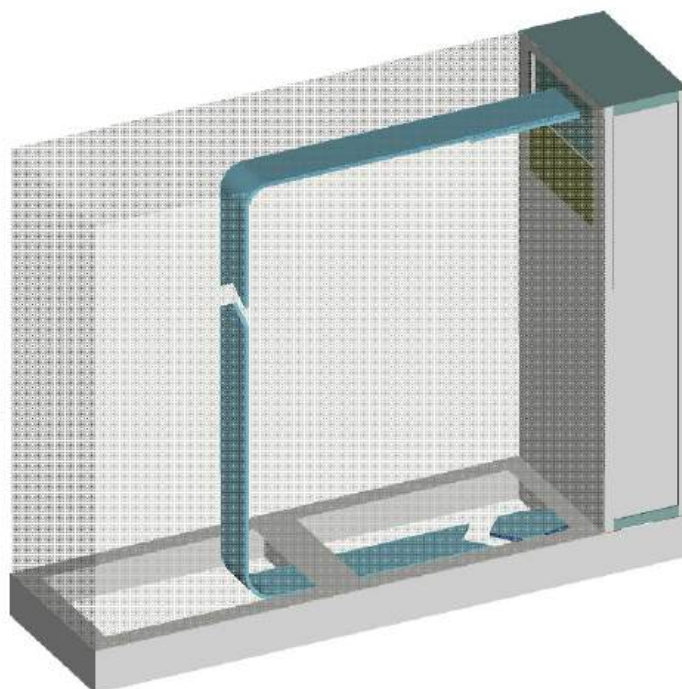
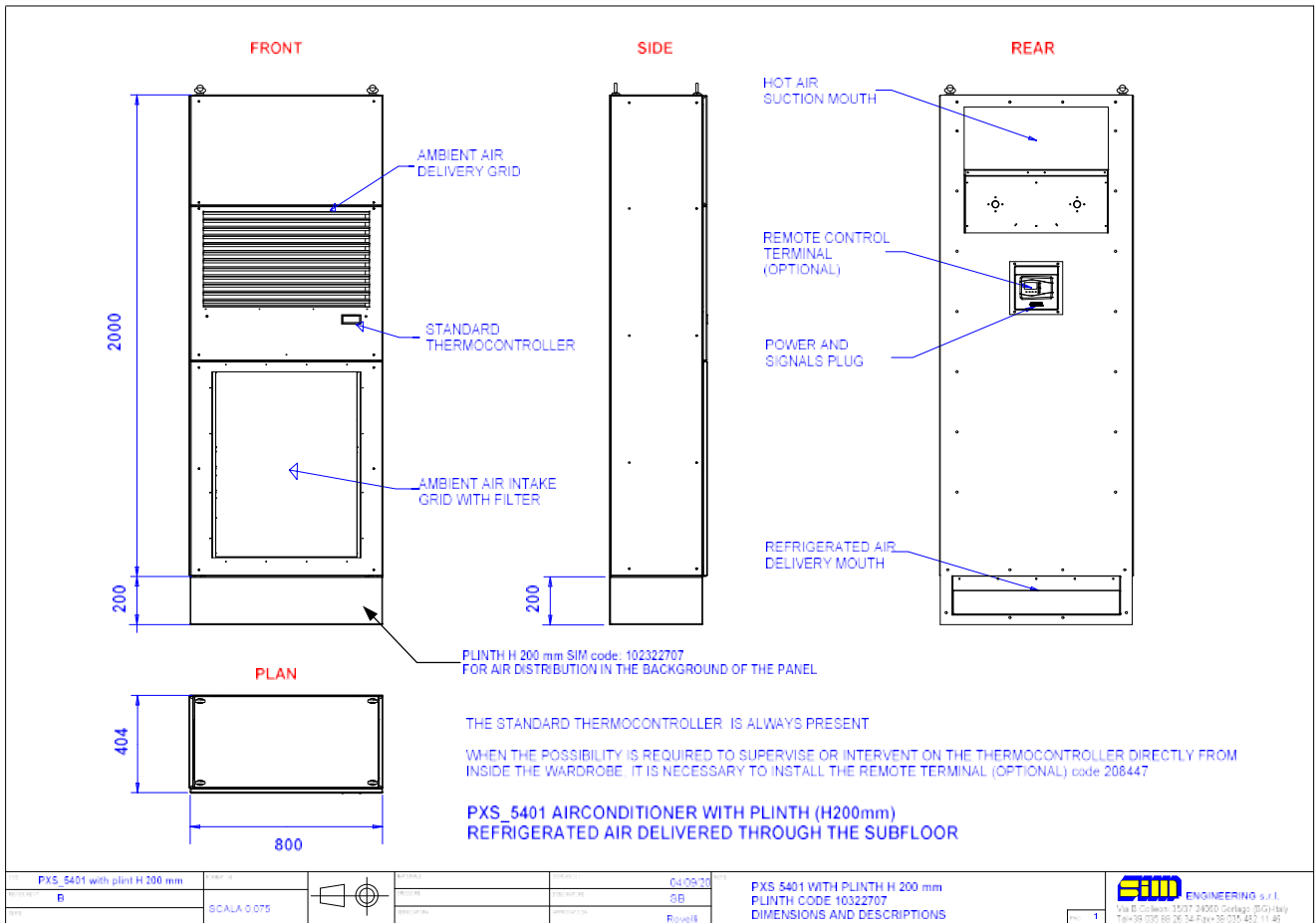


<table border="1"> <tr> <td>PXS_5401 STANDARD</td> <td>SCALE 0,075</td> <td></td> <td> <table border="1"> <tr> <td>REVISION</td> <td>04-09-20</td> </tr> <tr> <td>PROJEZIONE</td> <td>SB</td> </tr> <tr> <td>PRODOTTORE</td> <td>Rovelli</td> </tr> </table> </td> <td> PXS 5401 STANDARD DIMENSIONS AND DESCRIPTIONS </td> <td> ENGINEERING s.r.l. Via B. Colleoni 35/37 - 24060 GORLAGO (BG) ITALY Tel+39 035 882634 Fax+39 035 4821146 </td> </tr> </table>	PXS_5401 STANDARD	SCALE 0,075		<table border="1"> <tr> <td>REVISION</td> <td>04-09-20</td> </tr> <tr> <td>PROJEZIONE</td> <td>SB</td> </tr> <tr> <td>PRODOTTORE</td> <td>Rovelli</td> </tr> </table>	REVISION	04-09-20	PROJEZIONE	SB	PRODOTTORE	Rovelli	PXS 5401 STANDARD DIMENSIONS AND DESCRIPTIONS	 ENGINEERING s.r.l. Via B. Colleoni 35/37 - 24060 GORLAGO (BG) ITALY Tel+39 035 882634 Fax+39 035 4821146
PXS_5401 STANDARD	SCALE 0,075		<table border="1"> <tr> <td>REVISION</td> <td>04-09-20</td> </tr> <tr> <td>PROJEZIONE</td> <td>SB</td> </tr> <tr> <td>PRODOTTORE</td> <td>Rovelli</td> </tr> </table>	REVISION	04-09-20	PROJEZIONE	SB	PRODOTTORE	Rovelli	PXS 5401 STANDARD DIMENSIONS AND DESCRIPTIONS	 ENGINEERING s.r.l. Via B. Colleoni 35/37 - 24060 GORLAGO (BG) ITALY Tel+39 035 882634 Fax+39 035 4821146	
REVISION	04-09-20											
PROJEZIONE	SB											
PRODOTTORE	Rovelli											



Air conditioner for cabinet and control panels **Pxs 5401 – Pxs 5315**

Overall size mounting with plinth (H 200 mm) for refrigerated air delivery in the subfloor



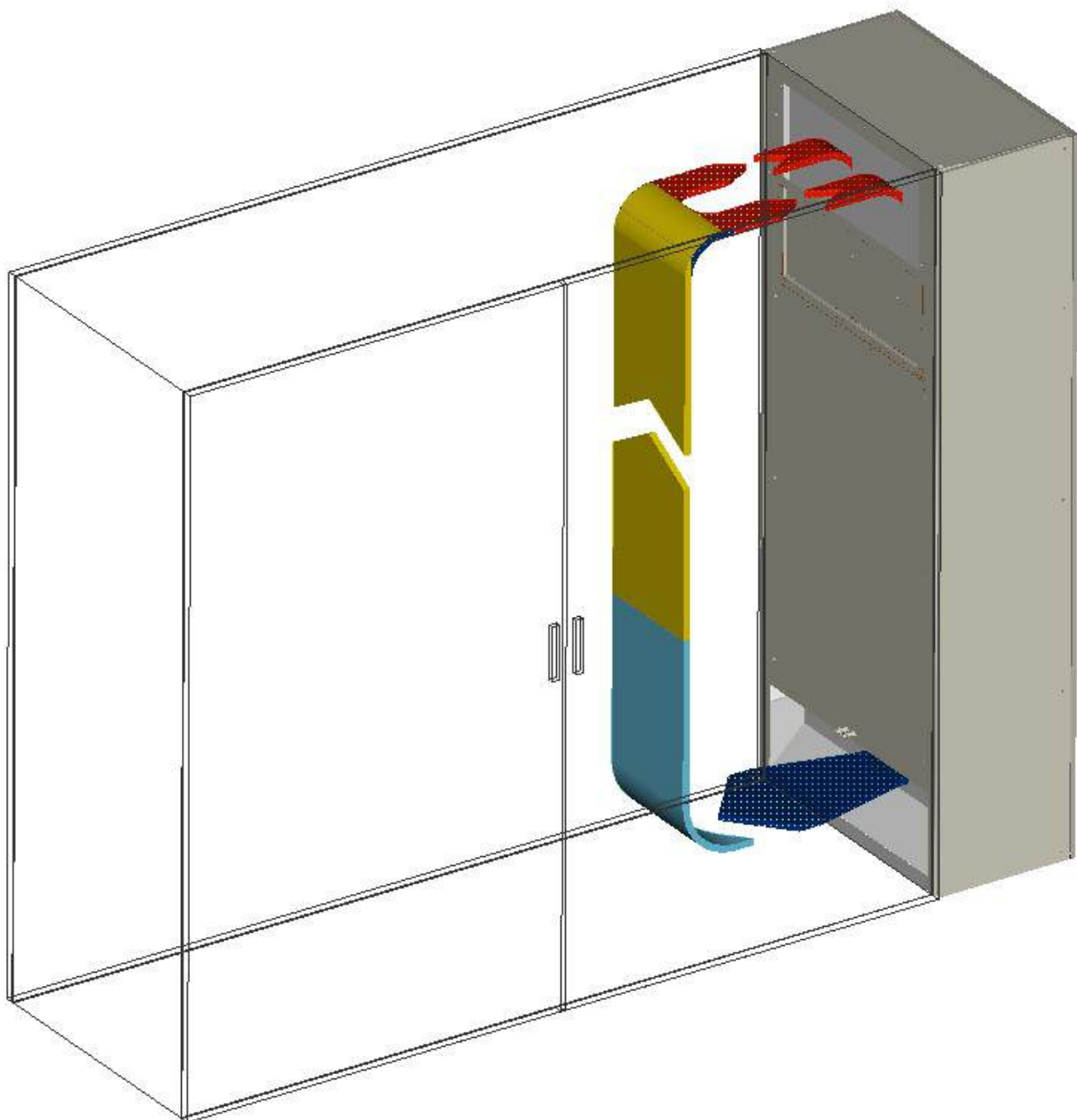
Air conditioner for cabinet and control panels **Pxs 5401 – Pxs 5315**

VENTILATION FLOWS:

The large distance between the ventilation windows of the cabinet ensures a uniform distribution of the temperature, preventing the formation of heat pockets.

The flow of air expelled from the condenser, directed upwards, does not disturb the personnel operating near the equipment.

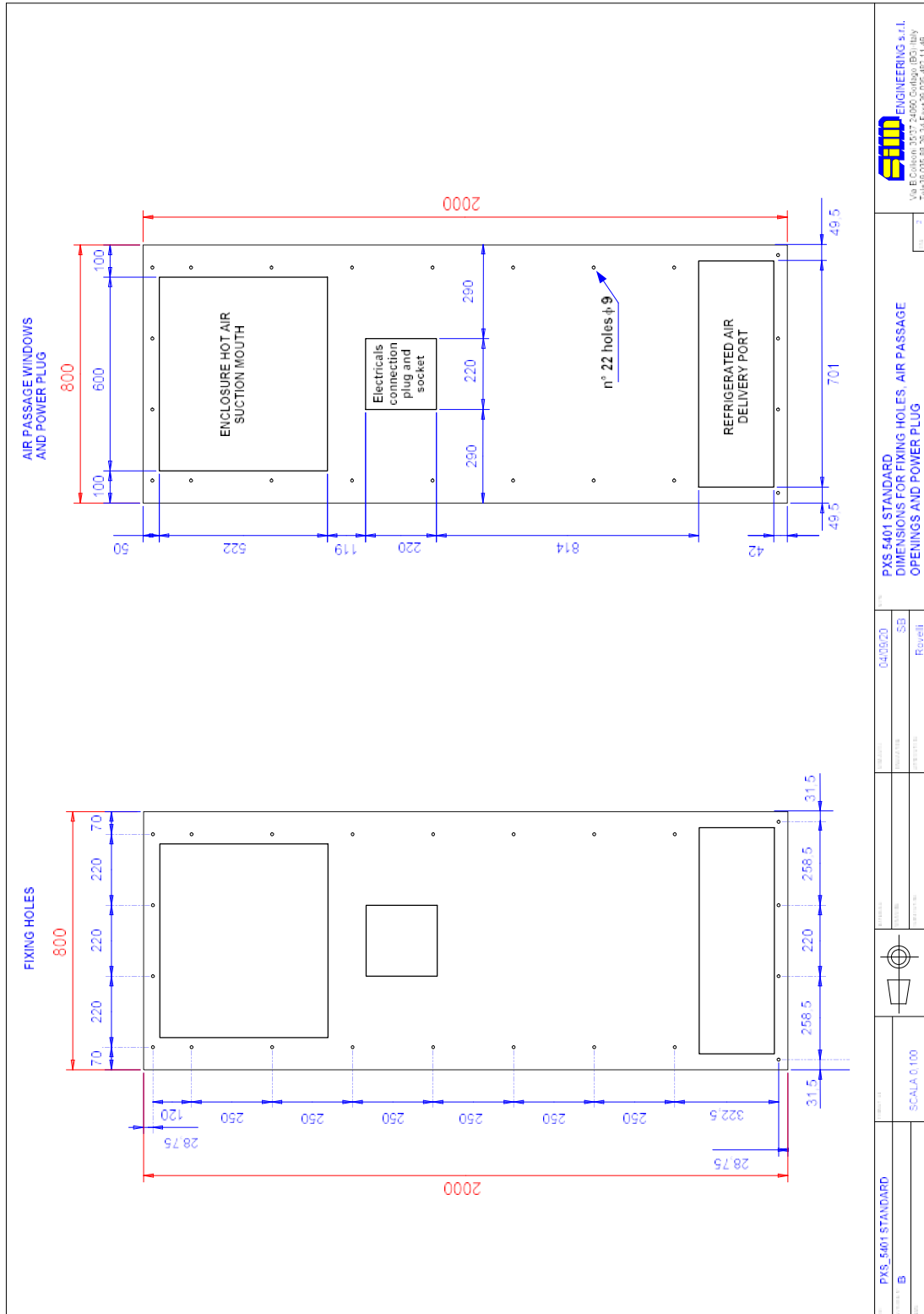
A filtering septum in aluminum mesh provides for the filtration of the air intaked from the environment



Air conditioner for cabinet and control panels **Pxs 5401 – Pxs 5315**

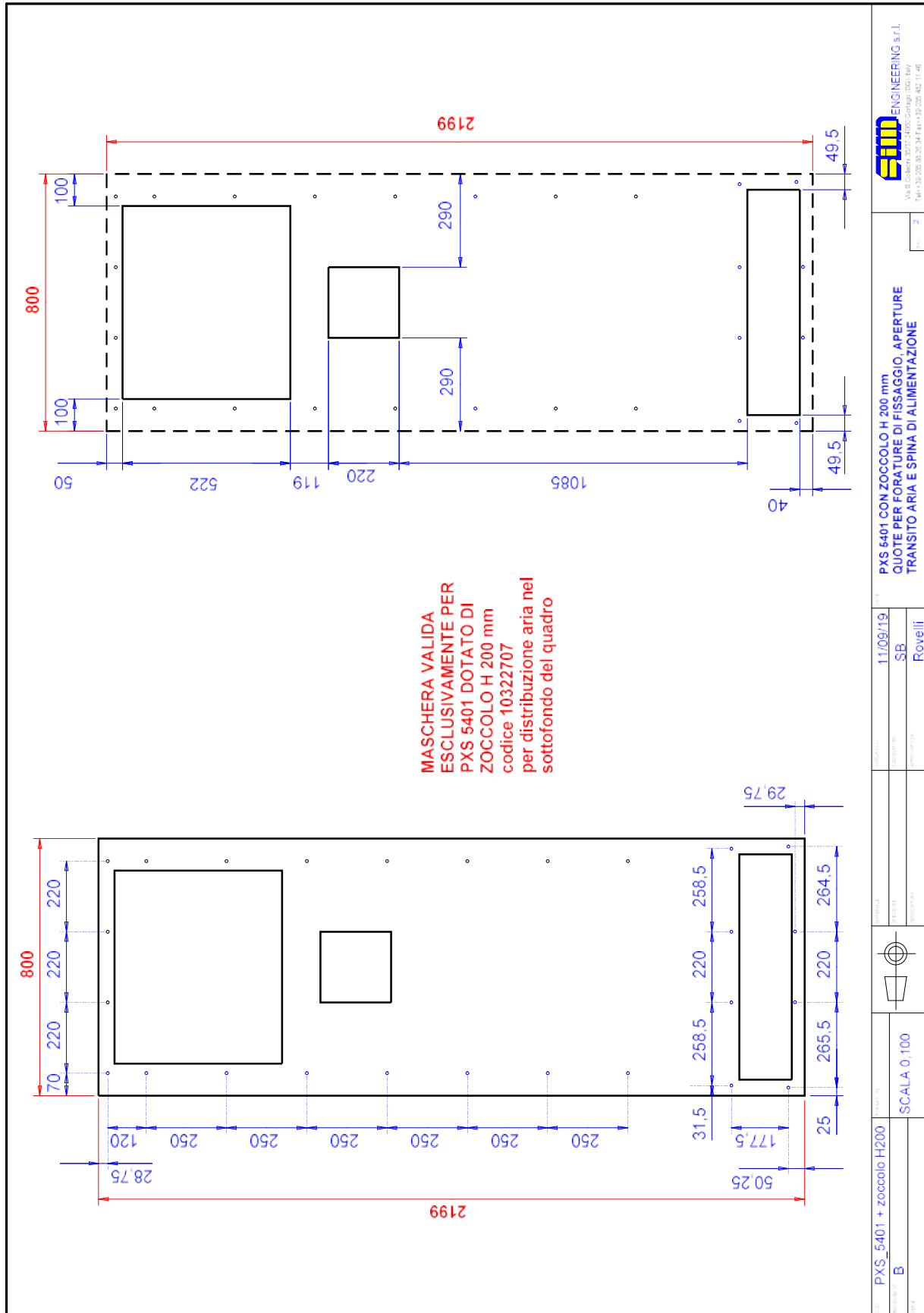
BORING SHEET FOR STANDARD INSTALLATION: AND FOR CABINET H 2000 WITHOUT BASE

FOR CABINET H 1800 WITH BASE (H 200 mm)



Air conditioner for cabinet and control panels Pxs 5401 – Pxs 5315

BORING SHEET FOR INSTALLATION WITH BASE: FOR CABINET H 2000 WITH BASE H 200 mm



PXS 5401 CON ZOCCOLO H 200 mm
QUOTE PER FORATURE DI FISSAGGIO, APERTURE
TRANSITO ARIA E SPINA DI ALIMENTAZIONE

11/09/19
 SB
 Rovelli

PXS_5401 + zoccolo H200
 B

SCALA 0,100

